

Sixteenth Conference of Ministers and Chiefs of Planning of Latin America and the Caribbean

Planning for sustainable territorial development in Latin America and the Caribbean

Panel 4 “Implementation of territorial development policies and their financing”

The Brazilian Multiannual Plan and its Regional Development Policy

Montevideo, August 28 and 29, 2019

SECRETARIAT OF
EVALUATION, PLANNING,
ENERGY AND LOTTERY

SPECIAL SECRETARIAT OF
FINANCE

MINISTRY OF
ECONOMY



www.economia.gov.br

Methodological Pillars of the Brazilian Multiannual Plan - PPA 2020-2023

- Methodological simplification
 - Fiscal realism
 - Integration between planning and evaluation
 - Strategic vision and management focus on results
- (Situational Strategic Planning Model)

PPA 2020-2023: Methodological Aspects

1. Policy Formulation from Logic Approach

- Problems are attacked by many Actions gathered in Programs with Government Guidelines (focus on: Causes => Consequences)

2. Planning Dimensions

- Strategical (Guidelines), Tactical (Programs), and Operational (Actions)

3. Management Improvement

- Government High Level Comissions for Programs' Monitoring and Evaluation focus on Priorities

4. Governance Perspective

- Leadership, Control and Strategy Initiatives

Examples of Governance Initiatives

Leadership

- *Strengthening of the government decision-making core*
- *Stablishment of Ministries' Governance Committees*
- *Implementation of the Monitoring and Evaluation Council*

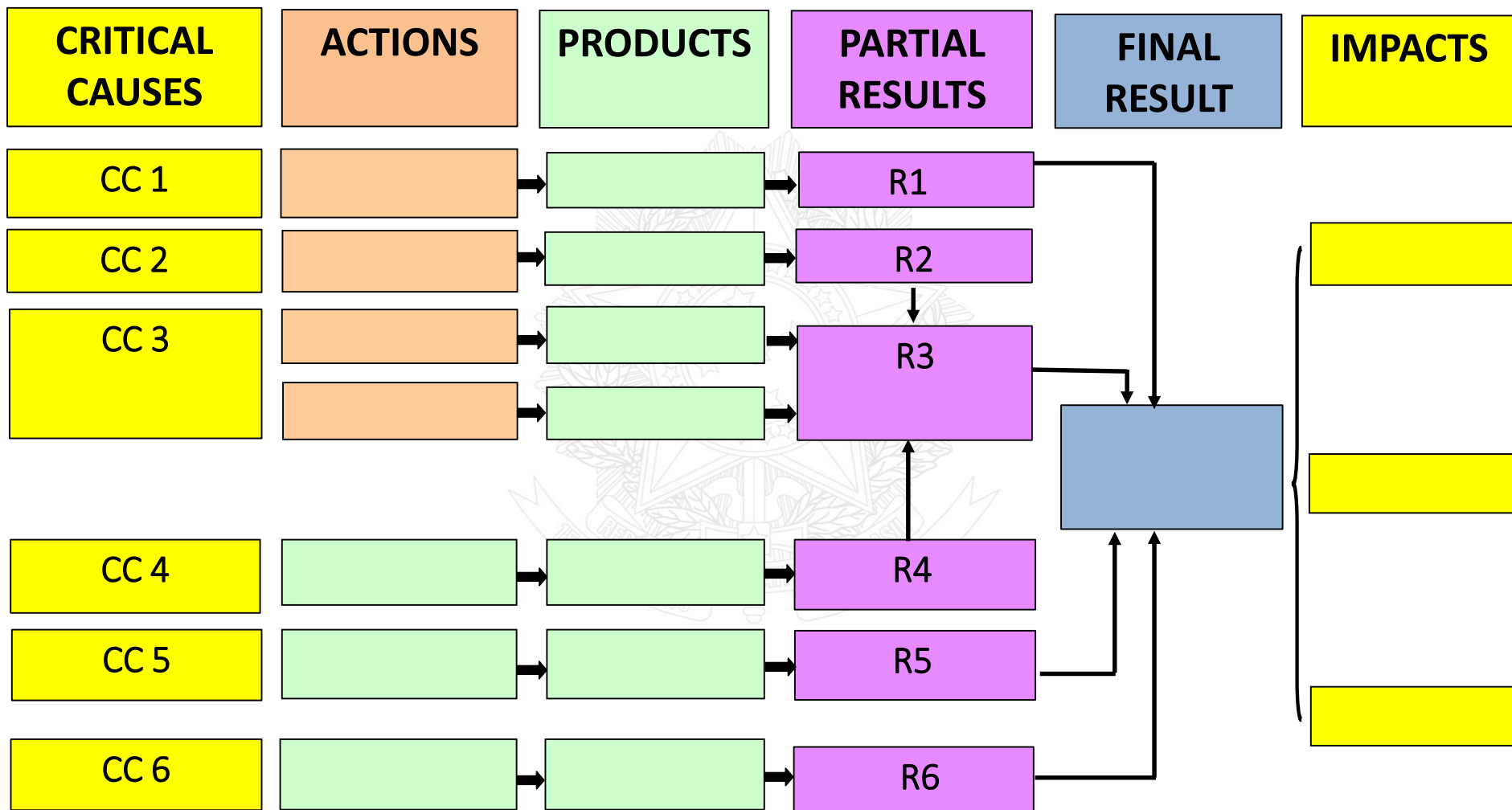
Control

- *Improvement of Government Transparency*
- *Promotion of Civic Engagement Actions*
- *Encouraging Social Accountability for Public Policy Evaluation*

Strategy

- *Alignment of Ministerial Strategic Plans with the PPA*
- *Performance Contract Implementation*
- *Prioritization of Programs for Evaluation*

PPA Program: The Logic Approach



The Brazilian Regional Development Program

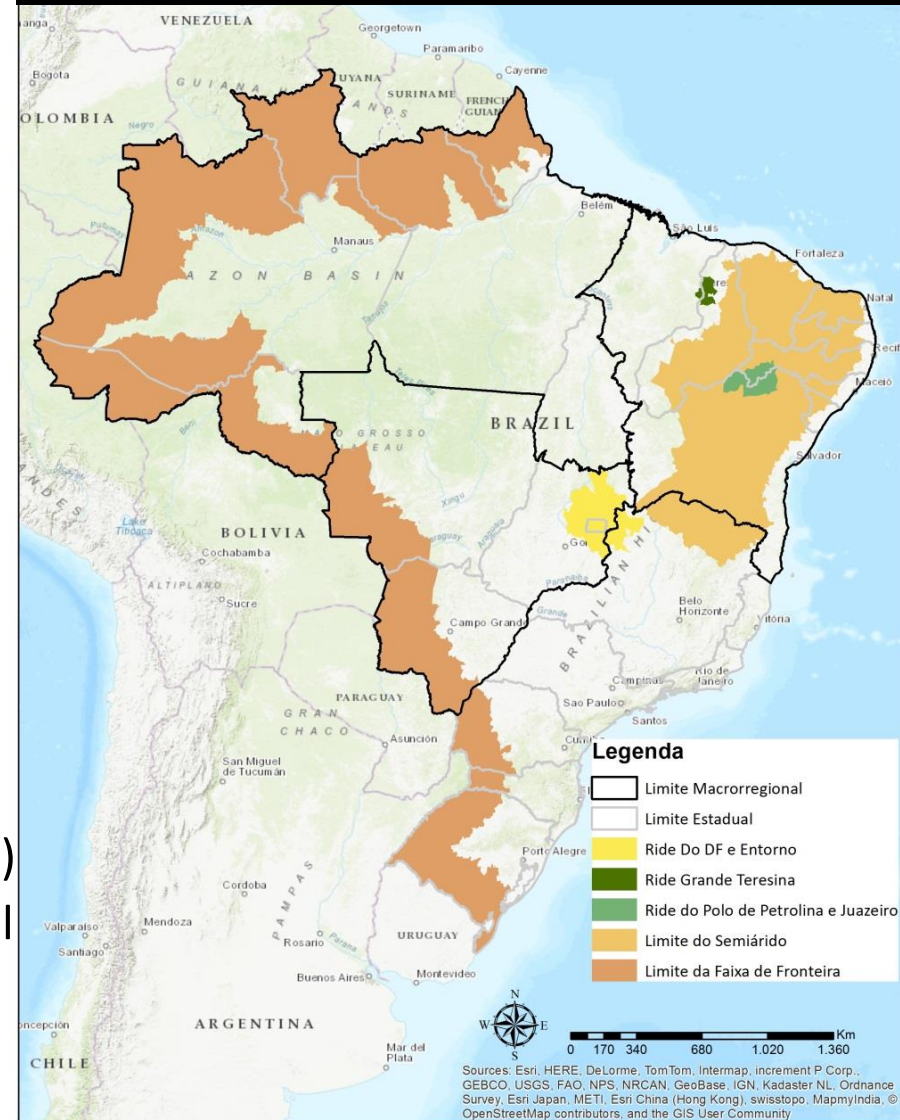
Aim: Stimulate the development of territories, cities and regions, expanding the productive and urban structuring, and the provision of public services to reduce socioeconomic inequalities, on multiple scales.

Partial Results	Final Result
Promotion of Local Productive Arrangements	Reduction of Regional Inequalities
Implementation of Irrigation Projects	
Development of Border Infrastructure	
Encouraging Regional Innovation Network	
Promotion of Integrated Regional Management	
Increase the Water Availability	
Support the Inter-Federative Planning	
Performance Contracts with Social Organizations	
Strengthening of the Network of Medium Cities	

Institutional Framework of the Brazilian Regional Development Public Policy

- Constitution
 - ✓ Reduction of Regional Inequalities
 - ✓ Government Planning focus on Regional Development
- Decree n. 9810 (May 30, 2019)
 - ✓ Convergence of inter and intra-region levels of development and quality of life
 - ✓ Polycentric network of cities (internalization of regional development)
 - ✓ Productivity gains and increased regional competitiveness
 - ✓ Competitiveness and productivity of regional supply chains

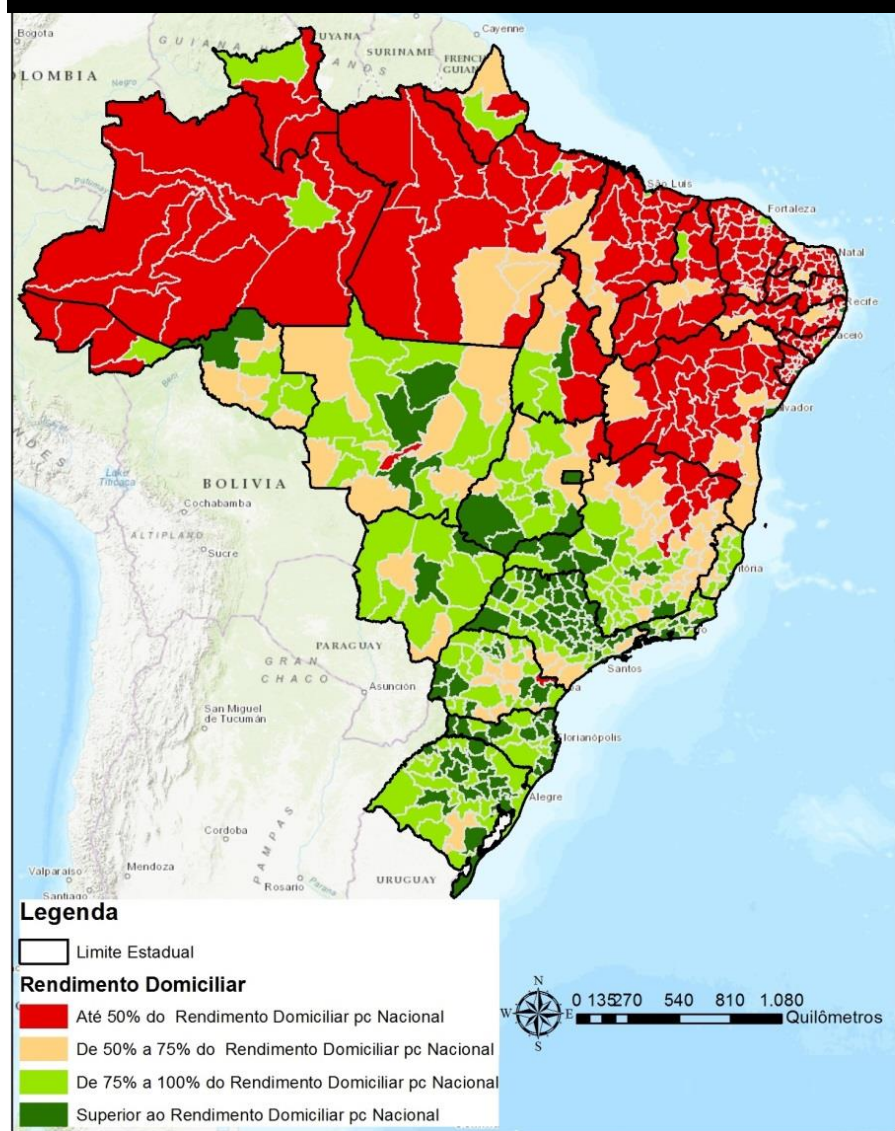
Priority Areas for Regional Development



The Policy Focus' of Brazilian Regional Development

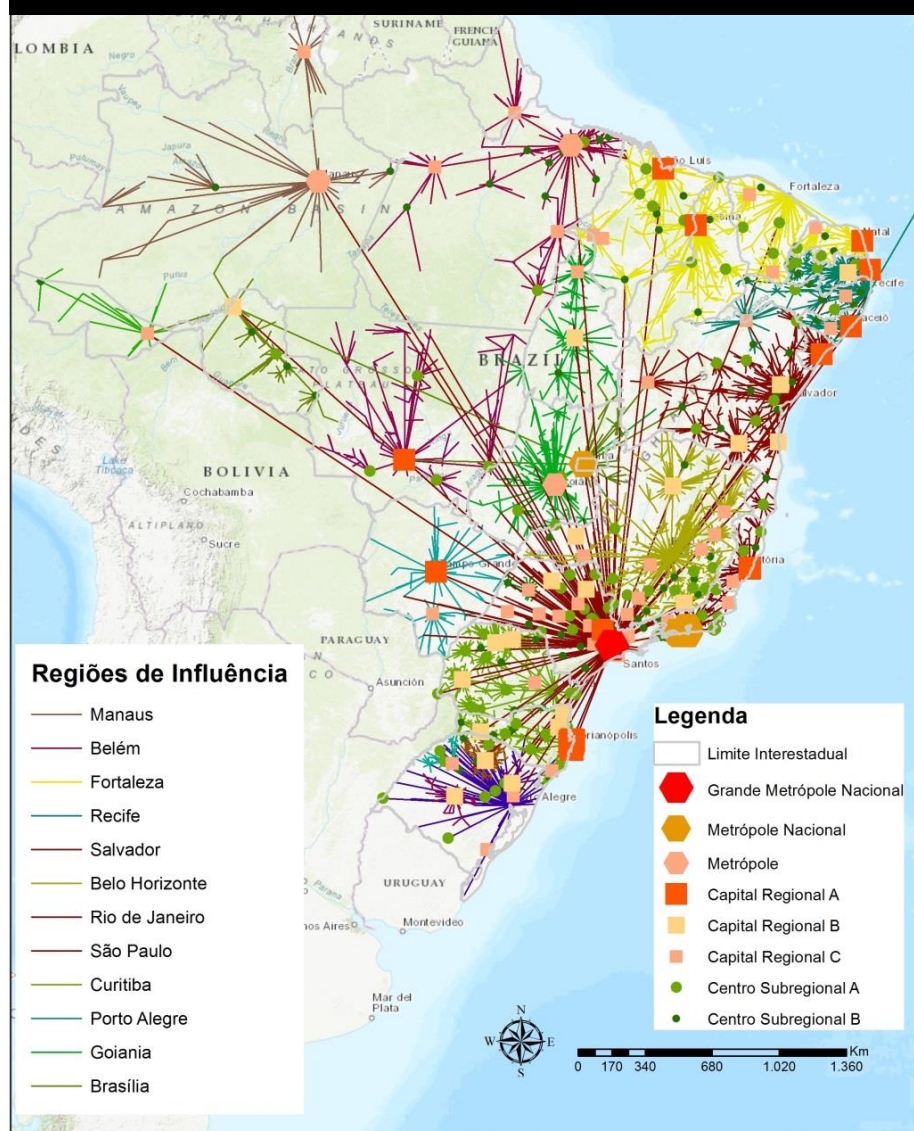
Social Inequalities

Household Income Per Capita (2000-2010)

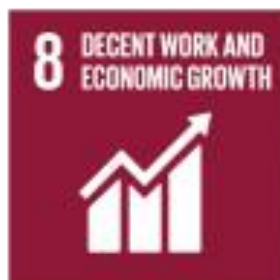


Economic Dependency

Regional Influence of Cities (2007)



The Contribution of Brazilian Regional Development Program to the



SECRETARIAT OF
EVALUATION, PLANNING,
ENERGY AND LOTTERY

SPECIAL SECRETARIAT OF
FINANCE

MINISTRY OF
ECONOMY



Thank You!!!

Welles Matias de Abreu

Email: *welles.abreu@planejamento.gov.br*

SECRETARIAT OF
EVALUATION, PLANNING,
ENERGY AND LOTTERY

SPECIAL SECRETARIAT OF
FINANCE

MINISTRY OF
ECONOMY



www.economia.gov.br